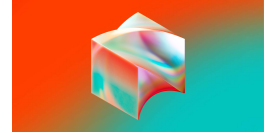




# SERVICES-PREPACKAGED SOFTWARE 2025



Block Inc  
Rank 43 of 135

The relative strengths and weaknesses of Block Inc are analyzed with respect to the market average, including all of its competitors. We analyzed all variables having an effect on the Economic Capital Ratio.

The greatest strength of Block Inc compared to the market average is the variable Stockholders Equity, increasing the Economic Capital Ratio by 77% points. The greatest weakness of Block Inc is the variable Other Liabilities, reducing the Economic Capital Ratio by 60% points.

The company's Economic Capital Ratio, given in the ranking table, is 418%, being 83% points above the market average of 335%.

Input Variable	Value in 1000 USD
Assets, Current	19,880,201
Assets, Noncurrent	1,239,548
General and Administrative Exp.	2,149,099
Intangible Assets	13,070,443
Liabilities, Current	8,709,233
Long-term Debt	430,781
Other Assets	2,272,971
Other Compr. Net Income	-622,758
Other Expenses	14,671,604
Other Liabilities	6,402,619
Other Net Income	464,827
Other Revenues	24,121,053
Property, Plant and Equipment, Net	314,432
Research and Development Exp.	2,914,415
Selling and Marketing Exp.	1,984,265

Output Variable	Value in 1000 USD
Liabilities	15,542,633
Assets	36,777,595
Expenses	21,719,383
Revenues	24,121,053
Stockholders Equity	21,234,962
Net Income	2,866,497
Comprehensive Net Income	2,243,739
BaseVar	60,417,569
ECR before LimitedLiability	307%
Economic Capital Ratio	418%