

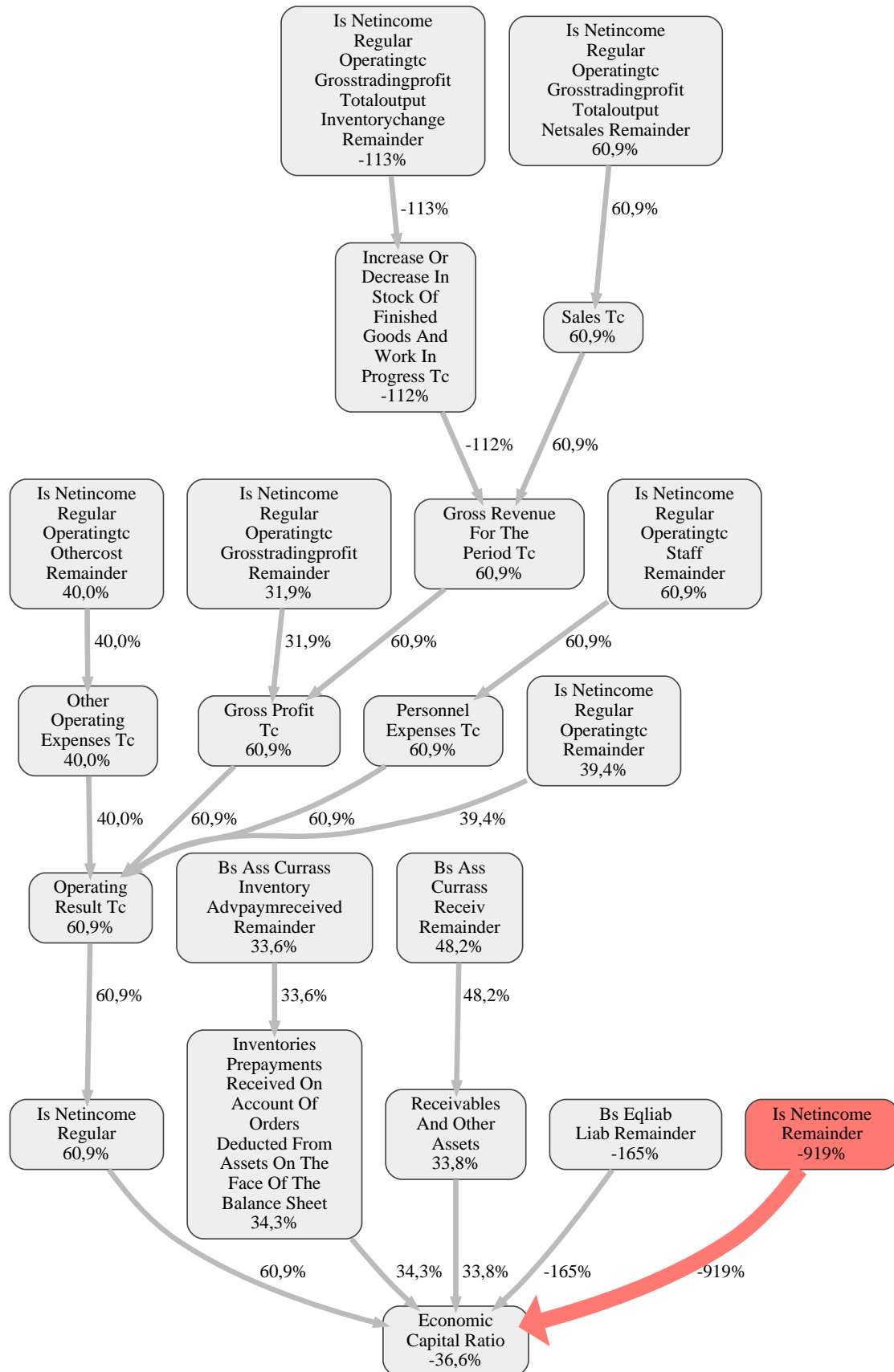


RealRate

BAUINDUSTRIE 2018

HS Bau GmbH
Rank 207 of 257

HS - BAU
GENERALÜBERNEHMER





RealRate

BAUINDUSTRIE 2018

HS Bau GmbH Rank 207 of 257

HS - BAU
GENERALÜBERNEHMER

The relative strengths and weaknesses of HS Bau GmbH are analyzed with respect to the market average, including all of its competitors. We analyzed all variables having an effect on the Economic Capital Ratio.

The greatest strength of HS Bau GmbH compared to the market average is the variable Is Netincome Regular Operatingtc Grosstradingprofit Totaloutput Netsales Remainder, increasing the Economic Capital Ratio by 61% points. The greatest weakness of HS Bau GmbH is the variable Is Netincome Remainder, reducing the Economic Capital Ratio by 919% points.

The company's Economic Capital Ratio, given in the ranking table, is 61%, being 37% points below the market average of 97%.

| Input Variable | Value in TEUR | Output Variable | Value in TEUR |
|--|---------------|---|---------------|
| Accounting_error Remainder | 0 | Is Netincome Regular Operatingtc Grosstradingprofit Materialservices Services Nursing | 0 |
| Ausgleichsposten_fuer_anteile_anderer_gesellschafter Remainder | 0 | Intangible Fixed Assets Prepayments | 0 |
| Ausserordentliche_aufwendungen Remainder | 0 | Bs Ass Fixass Intan Assets | 0 |
| Ausserordentliche_ertraege Remainder | 0 | Purchased Concessions Industrial And Similar Rights And Assets And Licences In Such Rights And Assets Concessions | 0 |
| Ausserordentliches_ergebnis Remainder | 0 | Purchased Concessions Industrial And Similar Rights And Assets And Licences In Such Rights And Assets Licences In Rights And Assets | 0 |
| Bs Ass Currass Cashequiv Remainder | 6,3 | Purchased Concessions Industrial And Similar Rights And Assets And Licences In Such Rights And Assets Other Rights And Assets | 0 |
| Bs Ass Currass Inventory Advpaympaid Remainder | 0 | Purchased Concessions Industrial And Similar Rights And Assets And Licences In Such Rights And Assets Computer Software | 0 |
| Bs Ass Currass Inventory Advpaymreceived Contractprogress Remainder | 0 | Purchased Concessions Industrial And Similar Rights And Assets And Licences In Such Rights And Assets Industrial Rights | 0 |
| Bs Ass Currass Inventory Advpaymreceived Remainder | 0 | Bs Ass Fixass Intan Concessionbrands Websites | 0 |
| Bs Ass Currass Inventory Finishedandmerch Goods Remainder | 0 | Purchased Concessions Industrial And Similar Rights And Assets Licences In Such Rights And Assets | 0 |
| Bs Ass Currass Inventory Finishedandmerch Merchandise Remainder | 0 | Concessions Industrial And Similar Rights And Assets And Licences In Such Rights And Assets Purchased Or Acquired Free Of Charge | 0 |
| Bs Ass Currass Inventory Finishedandmerch Notyetinvoiced Remainder | 0 | Goodwill | 0 |
| Bs Ass Currass Inventory Finishedandmerch Remainder | 0 | | |
| Bs Ass Currass Inventory Gross Remainder | 0 | | |
| Bs Ass Currass Inventory Inprogress Constructioninprogress Remainder | 0 | | |
| Bs Ass Currass Inventory Inprogress Goods Remainder | 0 | | |
| Bs Ass Currass Inventory Inprogress Ordersinprogress Remainder | 0 | | |



RealRate

BAUINDUSTRIE 2018

HS Bau GmbH
Rank 207 of 257

HS - BAU
GENERALÜBERNEHMER

| Input Variable | Value in TEUR | Output Variable | Value in TEUR |
|---|---------------|--|---------------|
| Bs Ass Currass Inventory Inprogress Ownpropertyconstruction Remainder | 0 | Intangible Fixed Assets Other Intangible Fixed Assets | 0 |
| Bs Ass Currass Inventory Inprogress Remainder | 0 | Bs Ass Fixass Intan Selfmade Finished Software | 0 |
| Bs Ass Currass Inventory Inprogress Services Remainder | 0 | Internally Generated Industrial Property Rights And Similar Values Of Which Completed | 0 |
| Bs Ass Currass Inventory Inprogress_ Remainder | 0 | Internally Generated Industrial Property Rights And Similar Values | 0 |
| Bs Ass Currass Inventory Other Remainder | 0 | Intangible Fixed Assets | 2,3 |
| Bs Ass Currass Inventory Remainder | -3,6 | Other Interest And Similar Income Of Which Income From Discounting | 0 |
| Bs Ass Currass Landforsale Constrprepcosts Remainder | 0 | Increase Or Decrease In Stock Of Finished Goods And Work In Progress Tc Decrease Of Stock Of Orders In Progress And Construction Contracts In Progress | 0 |
| Bs Ass Currass Landforsale Landwithbuildingsunderconstr Remainder | 0 | Increase Or Decrease In Stock Of Finished Goods And Work In Progress Tc | -314 |
| Bs Ass Currass Landforsale Landwithfinishedbuildings Remainder | 0 | Is Netincome Regular Operatingtc Grosstradingprofit Totaloutput Jointvent | 0 |
| Bs Ass Currass Landforsale Landwithoutbuildings Remainder | 0 | Is Netincome Regular Operatingtc Grosstradingprofit Totaloutput Netsales_ | 0 |
| Bs Ass Currass Landforsale Remainder | 0 | Is Netincome Regular Operatingtc Grosstradingprofit Totaloutput Netsales Care | 0 |
| Bs Ass Currass Receiv Affil Remainder | 0 | Is Netincome Regular Operatingtc Grosstradingprofit Totaloutput Netsales Nursing | 0 |
| Bs Ass Currass Receiv Assoc Remainder | 0 | Is Netincome Regular Operatingtc Grosstradingprofit Totaloutput Netsales Propertymanagement | 0 |
| Bs Ass Currass Receiv Care Remainder | 0 | Is Netincome Regular Operatingtc Grosstradingprofit Totaloutput Netsales Propertymanagementrefugeehostel | 0 |
| Bs Ass Currass Receiv Case Remainder | 0 | | |
| Bs Ass Currass Receiv Lease Remainder | 0 | | |
| Bs Ass Currass Receiv Other Jointwork Remainder | 0 | | |
| Bs Ass Currass Receiv Other Remainder | 0 | | |
| Bs Ass Currass Receiv Other Unpaidcapital Remainder | 0 | | |
| Bs Ass Currass Receiv Other Unpaysupplementarycalls Remainder | 0 | | |



RealRate

BAUINDUSTRIE 2018

HS Bau GmbH
Rank 207 of 257

HS - BAU
GENERALÜBERNEHMER

| Input Variable | Value in TEUR | Output Variable | Value in TEUR |
|--|---------------|--|---------------|
| Bs Ass Currass Receiv Other Unpaiduncalledsupplementarycalls Remainder | 0 | Is Netincome Regular Operatingtc Grosstradingprofit Totaloutput Netsales Property sales | 0 |
| Bs Ass Currass Receiv Particip Remainder | 0 | Sales Tc | 1.871 |
| Bs Ass Currass Receiv Property sales Remainder | 0 | Other Own Work Capitalised Tc | 0 |
| Bs Ass Currass Receiv Remainder | 343 | Gross Revenue For The Period Tc | 1.557 |
| Bs Ass Currass Receiv Retention Remainder | 0 | Is Netincome Thereoffminorityintprofit | 0 |
| Bs Ass Currass Receiv Rightofreleasefromtrustliabilities Notpensions Remainder | 0 | Write Downs Of Long Term Financial Assets And Securities Classified As Current Assets Regular And Unusual Write Downs Of Securities Classified As Current Assets | 0 |
| Bs Ass Currass Receiv Rightofreleasefromtrustliabilities Pensions Remainder | 0 | Write Downs Of Long Term Financial Assets And Securities Classified As Current Assets | 0 |
| Bs Ass Currass Receiv Rightofreleasefromtrustliabilities Remainder | 0 | Profits Received Under Profit Pooling Profit And Loss Transfer Or Partial Profit Transfer Agreements Parent Income From Taxes Credited To Parent By Consolidated Tax Group Subsidiaries | 0 |
| Bs Ass Currass Receiv Sales Remainder | 0 | Profits Received Under Profit Pooling Profit And Loss Transfer Or Partial Profit Transfer Agreements Parent Income From Profits Received From A Profit Transfer Fiscal Unity Profit Transfer | 0 |
| Bs Ass Currass Receiv Shareholders Limitedliable Remainder | 0 | Profits Received Under Profit Pooling Profit And Loss Transfer Or Partial Profit Transfer Agreements Parent Income From Profits Received From A Profit Transfer Fiscal Unity | 0 |
| Bs Ass Currass Receiv Shareholders Remainder | 0 | Profits Received Under Profit Pooling Profit And Loss Transfer Or Partial Profit Transfer Agreements Parent | 0 |
| Bs Ass Currass Receiv Shareholders Unlimitedliable Remainder | 0 | | |
| Bs Ass Currass Receiv Trade Other Remainder | 0 | | |
| Bs Ass Currass Receiv Trade Remainder | 0 | | |
| Bs Ass Currass Receiv Trade_ Remainder | 0 | | |
| Bs Ass Currass Receiv Unpaidcapital Remainder | 0 | | |



RealRate

BAUINDUSTRIE 2018

HS Bau GmbH
Rank 207 of 257

HS - BAU
GENERALÜBERNEHMER

| Input Variable | Value in TEUR | Output Variable | Value in TEUR |
|---|---------------|---|---------------|
| Bs Ass Currass Receiv Unpaidcapitalunlimitedliablepartner Remainder | 0 | Income From Other Securities And Long Term Loans | 0 |
| Bs Ass Currass Remainder | 0,000010 | Is Netincome Regular Fin Netparticipation Earnings Assoc | 0 |
| Bs Ass Currass Securities Affil Remainder | 0 | Income From Long Term Equity Investments Of Which From Affiliated Companies | 0 |
| Bs Ass Currass Securities Other Remainder | 0 | Income From Long Term Equity Investments Of Which From Non Affiliated Companies | 0 |
| Bs Ass Currass Securities Remainder | 0 | Income From Long Term Equity Investments | 0 |
| Bs Ass Deficitnotcoveredbycapital Remainder | 0 | Is Netincome Regular Fin Netparticipation Expensesassoc | 0 |
| Bs Ass Deftax Remainder | 0 | Is Netincome Regular Fin Netparticipation Loss Assoc | 0 |
| Bs Ass Fixass Fin Advpaym Remainder | 0 | Expenses For Loss Absorption Parent | 0 |
| Bs Ass Fixass Fin Advpaymsharesinaffil Remainder | 0 | Is Netincome Regular Fin Netparticipation Losses | 0 |
| Bs Ass Fixass Fin Loans Remainder | 0 | Net Investment Income | 0 |
| Bs Ass Fixass Fin Loanstoaffil Remainder | 0 | Bs Ass Fixass Fin Advpaymsharesinaffil | 0 |
| Bs Ass Fixass Fin Loanstoparticip Remainder | 0 | Average Number Of Employees | 0 |
| Bs Ass Fixass Fin Loanstosharehold Remainder | 0 | Bs Eqliab Liab_ | 0 |
| Bs Ass Fixass Fin Otherfinass Coopshares Remainder | 0 | Liabilities Of Which Due After More Than1 Year | 0 |
| Bs Ass Fixass Fin Otherfinass Reinsurclaim Remainder | 0 | Payments Received On Account Of Orders Of Which Payments On Account | 0 |
| Bs Ass Fixass Fin Otherfinass Remainder | 0 | Payments Received On Account Of Orders | 0 |
| Bs Ass Fixass Fin Otherloans Remainder | 0 | Bs Eqliab Liab Assoc | 0 |
| Bs Ass Fixass Fin Particip Advpaym Remainder | 0 | Liabilities To Affiliated Companies | 0 |
| Bs Ass Fixass Fin Particip Assoc Remainder | 0 | Liabilities To Banks Of Which Due After More Than1 Year | 0 |



RealRate

BAUINDUSTRIE 2018

HS Bau GmbH
Rank 207 of 257

HS - BAU
GENERALÜBERNEHMER

| Input Variable | Value in TEUR |
|---|---------------|
| Bs Ass Fixass Fin Particip Other Remainder | 0 |
| Bs Ass Fixass Fin Particip Remainder | 0 |
| Bs Ass Fixass Fin Participassoc Remainder | 0 |
| Bs Ass Fixass Fin Remainder | 0 |
| Bs Ass Fixass Fin Securities Remainder | 0 |
| Bs Ass Fixass Fin Sharesinaffil Corporations Remainder | 0 |
| Bs Ass Fixass Fin Sharesinaffil Remainder | 0 |
| Bs Ass Fixass Intan Advpaym Remainder | 0 |
| Bs Ass Fixass Intan Assets Remainder | 0 |
| Bs Ass Fixass Intan Concessionbrands Concession Remainder | 0 |
| Bs Ass Fixass Intan Concessionbrands Licenses Remainder | 0 |
| Bs Ass Fixass Intan Concessionbrands Other Remainder | 0 |
| Bs Ass Fixass Intan Concessionbrands Remainder | 0 |
| Bs Ass Fixass Intan Concessionbrands Software Remainder | 0 |
| Bs Ass Fixass Intan Concessionbrands Trademarks Remainder | 0 |
| Bs Ass Fixass Intan Concessionbrands Websites Remainder | 0 |
| Bs Ass Fixass Intan Freeandpaidconcession Remainder | 0 |
| Bs Ass Fixass Intan Goodwill Remainder | 0 |
| Bs Ass Fixass Intan Other Remainder | 0 |
| Bs Ass Fixass Intan Remainder | 2,3 |

| Output Variable | Value in TEUR |
|---|---------------|
| Liabilities To Banks Of Which Due Within1 Year | 0 |
| Liabilities To Banks | 0 |
| Bs Eqliab Liab Lease | 0 |
| Bs Eqliab Liab Leasingcompanies | 0 |
| Liabilities On Bills Accepted And Drawn | 0 |
| Other Liabilities Of Which From Capital Lease Contracts | 0 |
| Other Liabilities Other Liabilities To Project Consortiums | 0 |
| Bs Eqliab Liab Other Thereofsocsec | 0 |
| Bs Eqliab Liab Other Thereoftax | 0 |
| Other Liabilities | 0 |
| Liabilities Other Miscellaneous Debt Instruments | 0 |
| Liabilities To Other Long Term Investees And Investors | 0 |
| Bs Eqliab Liab Payers | 0 |
| Bs Eqliab Liab Propertysales | 0 |
| Bonds | 0 |
| Liabilities Liabilities To Shareholders Liabilities To Limited Partners | 0 |
| Liabilities Liabilities To Shareholders Liabilities To General Partners | 0 |
| Liabilities Liabilities To Shareholders | 0 |
| Liabilities To Silent Partners | 0 |
| Trade Payables From Care | 0 |
| Trade Payables Other Payables | 0 |
| Trade Payables | 0 |
| Bs Eqliab Liab Trustliabilities Pensions | 0 |
| Bs Eqliab Liab Trustliabilities | 0 |
| Liabilities Of Which Due Within1 Year | 0 |



RealRate

BAUINDUSTRIE 2018

HS Bau GmbH
Rank 207 of 257

HS - BAU
GENERALÜBERNEHMER

| Input Variable | Value in TEUR | Output Variable | Value in TEUR |
|--|---------------|---|---------------|
| Bs Ass Fixass Intan Selfmade Finished Remainder | 0 | Liabilities | 384 |
| Bs Ass Fixass Intan Selfmade Finished Software Remainder | 0 | Social Security Post Employment And Other Employee Benefit Costs Tc Of Which Post Employment Benefits | 0 |
| Bs Ass Fixass Intan Selfmade Remainder | 0 | Equity Equity Equivalent Profit Participation Loans | 0 |
| Bs Ass Fixass Remainder | 0 | Bs Ass Fixass Tan Landwithheritablebuildingrights_buildingthirdpartyland | 0 |
| Bs Ass Fixass Tan Advpaym Remainder | 0 | Provisions Provisions For Buildings Maintenance | 0 |
| Bs Ass Fixass Tan Buildingthirdpartyland Remainder | 0 | Is Netincome Regular Operatingtc Grosstradingprofit Materialservices Discounts | 0 |
| Bs Ass Fixass Tan Constrprepcosts Remainder | 0 | Is Netincome Regular Operatingtc Grosstradingprofit Materialservices_ | 0 |
| Bs Ass Fixass Tan Inconstradvpaym Remainder | 0 | Cost Of Raw Materials Consumables And Supplies And Of Purchased Merchandise Tc Cost Of Purchased Merchandise | 0 |
| Bs Ass Fixass Tan Landbuildings Advpaym Remainder | 0 | Cost Of Raw Materials Consumables And Supplies And Of Purchased Merchandise Tc Cost Of Raw Materials Consumables And Supplies | 0 |
| Bs Ass Fixass Tan Landbuildings Buildings Remainder | 0 | Cost Of Raw Materials Consumables And Supplies And Of Purchased Merchandise Tc | 0 |
| Bs Ass Fixass Tan Landbuildings Buildingsonownland Remainder | 0 | Cost Of Miscellaneous Other Materials Tc | 0 |
| Bs Ass Fixass Tan Landbuildings Landwithoutbuildings Remainder | 0 | Is Netincome Regular Operatingtc Grosstradingprofit Materialservices Services Propertymanagement | 0 |
| Bs Ass Fixass Tan Landbuildings Remainder | 0 | Is Netincome Regular Operatingtc Grosstradingprofit Materialservices Services Care | 0 |
| Bs Ass Fixass Tan Landwithbusinessbuildings Remainder | 0 | | |
| Bs Ass Fixass Tan Landwithheritablebuildingrights Remainder | 0 | | |
| Bs Ass Fixass Tan Landwithheritablebuildingrights_buildingthirdpartyland Remainder | 0 | | |



RealRate

BAUINDUSTRIE 2018

HS Bau GmbH
Rank 207 of 257

HS - BAU
GENERALÜBERNEHMER

| Input Variable | Value in TEUR | Output Variable | Value in TEUR |
|---|---------------|---|---------------|
| Bs Ass Fixass Tan Landwithnonresidentialbuildings Remainder | 0 | Cost Of Purchased Services Tc Of Which For Real Estate For Sale | 0 |
| Bs Ass Fixass Tan Landwithoutbuildingswuv Remainder | 0 | Is Netincome Regular Operatingtc Grosstradingprofit Materialservices Services Municipalmanagement | 0 |
| Bs Ass Fixass Tan Landwithresidentialbuildingswuv Remainder | 0 | Is Netincome Regular Operatingtc Grosstradingprofit Materialservices Services Other | 0 |
| Bs Ass Fixass Tan Machinery Machinery Remainder | 0 | Cost Of Purchased Services Tc Of Which For Other Services | 0 |
| Bs Ass Fixass Tan Machinery Remainder | 0 | Cost Of Purchased Services Tc | 0 |
| Bs Ass Fixass Tan Other Misc Remainder | 0 | Cost Of Materials Tc | 339 |
| Bs Ass Fixass Tan Other Remainder | 0 | Receivables And Other Assets Receivables From Shareholders Receivables From Limited Partners | 0 |
| Bs Ass Fixass Tan Otherequipm Factory Remainder | 0 | Receivables And Other Assets Receivables From Shareholders Receivables From General Partners | 0 |
| Bs Ass Fixass Tan Otherequipm Office Remainder | 0 | Receivables And Other Assets Receivables From Shareholders | 0 |
| Bs Ass Fixass Tan Otherequipm Otherbga Remainder | 0 | Inventories Prepayments | 0 |
| Bs Ass Fixass Tan Otherequipm Othertransportmeans Remainder | 0 | Of Which Due After More Than5 Years | 0 |
| Bs Ass Fixass Tan Otherequipm Remainder | 0 | Of Which Due Between1 And5 Years | 0 |
| Bs Ass Fixass Tan Remainder | 142 | Due After More Than1 Year Liab_primary Item Total Above1year | 0 |
| Bs Ass Other Remainder | 0 | Total Liab_primary Item Total | 0 |
| Bs Ass Prepaidexp Remainder | 10 | Liab_primaryitem Bank Above1year Above5years | 0 |
| Bs Ass Remainder | 0 | Liab_primaryitem Bank Above1year Upto5years | 0 |
| Bs Ass Surplusfromoffsetting Remainder | 0 | Liab_primaryitem Bank Above1year | 0 |
| Bs Contingliab Guarantees Remainder | 0 | Liab_primaryitem Bank | 0 |
| Bs Contingliab Remainder | 0 | | |
| Bs Eqliab Accruals Construction Remainder | 0 | | |



RealRate

BAUINDUSTRIE 2018

HS Bau GmbH
Rank 207 of 257

HS - BAU
GENERALÜBERNEHMER

| Input Variable | Value in TEUR | Output Variable | Value in TEUR |
|--|---------------|--|---------------|
| Bs Eqliab Accruals Maintenance Remainder | 0 | Work In Progress Contracted Construction In Progress | 0 |
| Bs Eqliab Accruals Other Remainder | 0 | Equity Foreign Currency Translation Difference | 0 |
| Bs Eqliab Accruals Pensions Remainder | 0 | Is Netincome Incomesharing Minorityint | 0 |
| Bs Eqliab Accruals Remainder | 25 | Profit And Loss Transfer Subsidiary Profit Transferred Under Profit Pooling Profit And Loss Transfer Or Partial Profit Transfer Agreements | 0 |
| Bs Eqliab Accruals Tax Deftax Remainder | 0 | Profit And Loss Transfer Subsidiary Income From Loss Absorption | 0 |
| Bs Eqliab Accruals Tax Gewst Remainder | 0 | Profit And Loss Transfer Subsidiary | 0 |
| Bs Eqliab Accruals Tax Remainder | 0 | Technical Equipment And Machinery Machinery And Tools Fixed To Machinery | 0 |
| Bs Eqliab Accruals_ Remainder | 0 | Technical Equipment And Machinery | 0 |
| Bs Eqliab Defincome Remainder | 0 | Cash In Hand Central Bank Balances Bank Balances And Cheques | 6,3 |
| Bs Eqliab Deftax Remainder | 8,8 | Is Netincome Regular Operatingtc Grosstradingloss Totaloutput Jointvent | 0 |
| Bs Eqliab Differencefromoffsetting Remainder | 0 | Is Netincome Regular Operatingtc Grosstradingloss Totaloutput | 0 |
| Bs Eqliab Equity Capres Other Remainder | 0 | Bs Eqliab Equity Revenueres Special17_4 | 0 |
| Bs Eqliab Equity Capres Partner Remainder | 0 | Bs Eqliab Equity Revenueres Special27_2 | 0 |
| Bs Eqliab Equity Capres Remainder | 0 | Revenue Reserves Special Reserve | 0 |
| Bs Eqliab Equity Currtransl Remainder | 0 | Loans To Affiliated Companies | 0 |
| Bs Eqliab Equity Duetopartners Remainder | 0 | Land And Land Rights With Business Buildings And Other Buildings | 0 |
| Bs Eqliab Equity Netincome Remainder | 13 | Is Netincome Regular Operatingtc Depramort Fixassrefugeehostel | 0 |
| Bs Eqliab Equity Noncontrollingshares Remainder | 0 | Verbindlichkeiten | 0 |
| Bs Eqliab Equity Profitloss Additionreserves Remainder | 0 | | |
| Bs Eqliab Equity Profitloss Noncontrollingshares Remainder | 0 | | |
| Bs Eqliab Equity Profitloss Releasereserves Remainder | 0 | | |
| Bs Eqliab Equity Profitloss Remainder | 0 | | |



RealRate

The First AI Rating Agency

www.realrate.ai



RealRate

BAUINDUSTRIE 2018

HS Bau GmbH
Rank 207 of 257

HS - BAU
GENERALÜBERNEHMER

| Input Variable | Value in TEUR | Output Variable | Value in TEUR |
|---|---------------|---|---------------|
| Bs Eqliab Equity Profitloss Use Remainder | 0 | Gross Profit Tc | 1.896 |
| Bs Eqliab Equity Profsharing Remainder | 0 | Net Retained Profits Net Accumulated Losses P L Advance Distribution Distribution Resolved For The Financial Year | 0 |
| Bs Eqliab Equity Remainder | -50 | Net Retained Profits Net Accumulated Losses P L | 0 |
| Bs Eqliab Equity Reservespartnership Remainder | 0 | Bs Ass Fixass Fin Particip Advpaym | 0 |
| Bs Eqliab Equity Retainedearnings Remainder | 45 | Capital Reserves In Accordance With Section2722 No4 Of The Hgb | 0 |
| Bs Eqliab Equity Revenueres Charityappropriated Remainder | 0 | Other Equipment Operating And Office Equipment Other Operating And Office Equipment | 0 |
| Bs Eqliab Equity Revenueres Legal Remainder | 0 | Expenses For The Cession Of Profit Participation Capital | 0 |
| Bs Eqliab Equity Revenueres Other Remainder | 0 | Bs Ass Currass Inventory Inprogress_ | 0 |
| Bs Eqliab Equity Revenueres Otherreswithdistrrestrict Remainder | 0 | Work In Progress Unfinished Goods | 0 |
| Bs Eqliab Equity Revenueres Remainder | 0 | Work In Progress Orders In Progress | 0 |
| Bs Eqliab Equity Revenueres Special Remainder | 0 | Bs Ass Currass Inventory Inprogress Ownpropertyconstruction | 0 |
| Bs Eqliab Equity Revenueres Special17_4 Remainder | 0 | Work In Progress Services In Progress | 0 |
| Bs Eqliab Equity Revenueres Special27_2 Remainder | 0 | Work In Progress | 0 |
| Bs Eqliab Equity Revenueres Statutory Remainder | 0 | Finished Goods And Merchandise Unbilled Services Rendered | 0 |
| Bs Eqliab Equity Revenueres Unappropriated Remainder | 0 | Subscribed Capital Capital Account Capital Shares Called Capital | 0 |
| Bs Eqliab Equity Revenueres_ Remainder | 0 | Subscribed Capital Capital Account Capital Shares Of Which Fixed Capital Limited Partners | 0 |
| Bs Eqliab Equity Silentpartner Remainder | 0 | Subscribed Capital Capital Account Capital Shares Of Which Variable Capital Limited Partners | 0 |
| Bs Eqliab Equity Subordinateloans Remainder | 0 | | |



RealRate

BAUINDUSTRIE 2018

HS Bau GmbH
Rank 207 of 257

HS - BAU
GENERALÜBERNEHMER

| Input Variable | Value in TEUR | Output Variable | Value in TEUR |
|--|---------------|--|---------------|
| Bs Eqliab Equity Subscribed Calledin Remainder | 0 | Subscribed Capital Capital Account Capital Shares Capital Share Of Limited Partners | 0 |
| Bs Eqliab Equity Subscribed Limitedliablepartners Fixed Remainder | 0 | Subscribed Capital Capital Account Capital Shares Treasury Shares Deducted From Subscribed Capital On The Face Of The Balance Sheet | 0 |
| Bs Eqliab Equity Subscribed Limitedliablepartners Remainder | 0 | Subscribed Capital Capital Account Capital Shares Capital Shares Of General Partners Of Which Fixed Capital General Partner | 0 |
| Bs Eqliab Equity Subscribed Limitedliablepartners Variable Remainder | 0 | Subscribed Capital Capital Account Capital Shares Capital Shares Of General Partners Of Which Variable Capital | 0 |
| Bs Eqliab Equity Subscribed Ownsharesdeducted Remainder | 0 | Subscribed Capital Capital Account Capital Shares Capital Shares Of General Partners | 0 |
| Bs Eqliab Equity Subscribed Remainder | 25 | Uncalled Unpaid Contributions To Subscribed Capital Deducted From Equity On The Face Of The Balance Sheet | 0 |
| Bs Eqliab Equity Subscribed Unlimitedliablepartners Fixed Remainder | 0 | Subscribed Capital Capital Account Capital Shares | 25 |
| Bs Eqliab Equity Subscribed Unlimitedliablepartners Remainder | 0 | Excess Of Plan Assets Over Pension Liability | 0 |
| Bs Eqliab Equity Subscribed Unlimitedliablepartners Variable Remainder | 0 | Inventories Prepayments Received On Account Of Orders Deducted From Assets On The Face Of The Balance Sheet Of Which Payments On Account | 0 |
| Bs Eqliab Equity Subscribed Unpaidcap Remainder | 0 | Inventories Prepayments Received On Account Of Orders Deducted From Assets On The Face Of The Balance Sheet | 0 |
| Bs Eqliab Equity Subscribedwithoutownshares Remainder | 25 | | |
| Bs Eqliab Equity Subscribedwithownshares Remainder | 25 | | |
| Bs Eqliab Equity_ Remainder | 0 | | |
| Bs Eqliab Liab Above1year Remainder | 0 | | |
| Bs Eqliab Liab Advpaym Contractprogress Remainder | 0 | | |
| Bs Eqliab Liab Advpaym Remainder | 0 | | |
| Bs Eqliab Liab Assoc Remainder | 0 | | |
| Bs Eqliab Liab Assoccomp Remainder | 0 | | |
| Bs Eqliab Liab Bank Above1year Remainder | 0 | | |



RealRate

BAUINDUSTRIE 2018

HS Bau GmbH
Rank 207 of 257

HS - BAU
GENERALÜBERNEHMER

| Input Variable | Value in TEUR |
|--|---------------|
| Bs Eqliab Liab Bank Remainder | 0 |
| Bs Eqliab Liab Bank Upto1year Remainder | 0 |
| Bs Eqliab Liab Lease Remainder | 0 |
| Bs Eqliab Liab Leasingcompanies Remainder | 0 |
| Bs Eqliab Liab Notes Remainder | 0 |
| Bs Eqliab Liab Other Capitallease Remainder | 0 |
| Bs Eqliab Liab Other Jointvent Remainder | 0 |
| Bs Eqliab Liab Other Remainder | 0 |
| Bs Eqliab Liab Other Thereofsocsec Remainder | 0 |
| Bs Eqliab Liab Other Thereoftax Remainder | 0 |
| Bs Eqliab Liab Otherdebtinstruments Remainder | 0 |
| Bs Eqliab Liab Particip Remainder | 0 |
| Bs Eqliab Liab Payers Remainder | 0 |
| Bs Eqliab Liab Propertysales Remainder | 0 |
| Bs Eqliab Liab Remainder | 384 |
| Bs Eqliab Liab Securities Remainder | 0 |
| Bs Eqliab Liab Shareholders Limitedpartner Remainder | 0 |
| Bs Eqliab Liab Shareholders Remainder | 0 |
| Bs Eqliab Liab Shareholders Unlimitedpartner Remainder | 0 |
| Bs Eqliab Liab Silentpart Remainder | 0 |
| Bs Eqliab Liab Trade Care Remainder | 0 |
| Bs Eqliab Liab Trade Genother Remainder | 0 |

| Output Variable | Value in TEUR |
|---|---------------|
| Finished Goods And Merchandise Finished Goods | 0 |
| Finished Goods And Merchandise Merchandise | 0 |
| Finished Goods And Merchandise | 0 |
| Inventories Gross Before Deduction Of Prepayments | 0 |
| Inventories Other Inventories | 0 |
| Inventories | -3,6 |
| Current Assets Land And Other Inventories Deemed For Sale Construction Preparatory Costs | 0 |
| Current Assets Land And Other Inventories Deemed For Sale And And Land Rights With Buildings Under Construction | 0 |
| Current Assets Land And Other Inventories Deemed For Sale Land And Land Rights Wth Finished Buildings | 0 |
| Current Assets Land And Other Inventories Deemed For Sale Land And Land Rights Without Buildings | 0 |
| Current Assets Land And Other Inventories Deemed For Sale | 0 |
| Receivables From Affiliated Companies | 0 |
| Bs Ass Currass Receiv Assoc | 0 |
| Receivables And Other Assets Eceivables From Care | 0 |
| Bs Ass Currass Receiv Case | 0 |
| Receivables And Other Assets Receivables From Rent And Lease | 0 |



RealRate

BAUINDUSTRIE 2018

HS Bau GmbH
Rank 207 of 257

HS - BAU
GENERALÜBERNEHMER

| Input Variable | Value in TEUR | Output Variable | Value in TEUR |
|--|---------------|--|---------------|
| Bs Eqliab Liab Trade Remainder | 0 | Receivables And Other Assets Other Assets Receivables From Project Consortiums | 0 |
| Bs Eqliab Liab Trustliabilities Pensions Remainder | 0 | Receivables And Other Assets Unpaid Contributions To Subscribed Capital | 0 |
| Bs Eqliab Liab Trustliabilities Remainder | 0 | Receivables And Other Assets Unpaid Supplementary Calls | 0 |
| Bs Eqliab Liab Upto1year Remainder | 0 | Bs Ass Currass Receiv Other Unpaiduncalledsupplementarycalls | 0 |
| Bs Eqliab Liab_ Remainder | 0 | Receivables And Other Assets Other Assets | 0 |
| Bs Eqliab Otherspecres Equitysilentpartner Remainder | 0 | Receivables From Other Long Term Investees And Investors | 0 |
| Bs Eqliab Otherspecres Other Adjustmentitem Capitalconsolidation Remainder | 0 | Receivables And Other Assets Receivables From Property Sales | 0 |
| Bs Eqliab Otherspecres Other Adjustmentitem Remainder | 0 | Bs Ass Currass Receiv Retention | 0 |
| Bs Eqliab Otherspecres Other Remainder | 0 | Bs Ass Currass Receiv Rightofreleasefromtrustliabilities Notpensions | 0 |
| Bs Eqliab Otherspecres Ownshares Remainder | 0 | Bs Ass Currass Receiv Rightofreleasefromtrustliabilities Pensions | 0 |
| Bs Eqliab Otherspecres Paymforcapitalincrease Remainder | 0 | Bs Ass Currass Receiv Rightofreleasefromtrustliabilities | 0 |
| Bs Eqliab Otherspecres Remainder | 0 | Bs Ass Currass Receiv Sales | 0 |
| Bs Eqliab Otherspecres Subsidies Remainder | 0 | Bs Ass Currass Receiv Trade_ | 0 |
| Bs Eqliab Remainder | 0 | Trade Receivables Other Receivables | 0 |
| Bs Eqliab Retention Remainder | 0 | Trade Receivables | 0 |
| Bs Eqliab_ Remainder | 0 | Receivables And Other Assets Of Which Unpaid Contributions To Subscribed Capital | 0 |
| Bs Remainder | -500 | | |
| Dim_parentdrs22k Accgroupstatement Remainder | 0 | | |
| Dim_parentdrs22k Accgroupstatement Reserves Capres Remainder | 0 | | |
| Dim_parentdrs22k Accgroupstatement Reserves Capres272_2case4 Remainder | 0 | | |



RealRate

BAUINDUSTRIE 2018

HS Bau GmbH
Rank 207 of 257

HS - BAU
GENERALÜBERNEHMER

| Input Variable | Value in TEUR | Output Variable | Value in TEUR |
|---|---------------|---|---------------|
| Dim_parentdrs22k Accgroupstatement Reserves Remainder | 0 | Receivables And Other Assets Of Which Unpaid Contributions To Subscribed Capital Of General Partners | 0 |
| Dim_parentdrs22k Remainder | 0 | Receivables And Other Assets | 343 |
| Incomeuse Gainloss Dividensplanned Remainder | 0 | Shares In Affiliated Companies Current Assets | 0 |
| Incomeuse Gainloss Remainder | 0 | Securities Classified As Current Assets | 0 |
| Incomeuse Remainder | 0 | Other Securities Classified As Current Assets | 0 |
| Is Netincome Beforeothertaxes Remainder | 0 | Securities | 0 |
| Is Netincome Consolidationdifference Remainder | 0 | Current Assets | 346 |
| Is Netincome Eat Remainder | 15 | Deferred Tax Assets | 0 |
| Is Netincome Ebit Remainder | 0 | Deficit Not Covered By Equity Loss Participation Not Covered By Capital Contributions Withdrawals Not Covered By Capital Contributions Compensations Not Covered By Capital Contributions | 0 |
| Is Netincome Ebt Remainder | 0 | Bs Ass Fixass Fin Loans | 0 |
| Is Netincome Incomesharing Gain Remainder | 0 | Bs Ass Fixass Fin Advpaym | 0 |
| Is Netincome Incomesharing Loss Remainder | 0 | Loans To Other Long Term Investees And Investors | 0 |
| Is Netincome Incomesharing Minorityint Remainder | 0 | Loans To Shareholders | 0 |
| Is Netincome Incomesharing Remainder | 0 | Other Long Term Financial Assets | 0 |
| Is Netincome Othertaxes Earnings Remainder | 0 | Shares In Cooperatives | 0 |
| Is Netincome Othertaxes Remainder | 2,4 | Other Long Term Financial Assets | 0 |
| Is Netincome Priortoincomesharing Remainder | 0 | Pension Liability Claims From Life Insurance Policies | 0 |
| Is Netincome Profitparticipationequitynature Remainder | 0 | Other Long Term Financial Assets | 0 |
| Is Netincome Regular Fin Netinterest Expenses Remainder | 6,1 | Other Loans | 0 |
| Is Netincome Regular Fin Netinterest Expenses Valuediscount Remainder | 0 | Bs Ass Fixass Fin Particip Assoc | 0 |
| | | Other Long Term Equity Investments | 0 |
| | | Other Long Term Equity Investments Not Allocable To A Legal Form | 0 |



RealRate

BAUINDUSTRIE 2018

HS Bau GmbH
Rank 207 of 257

HS - BAU
GENERALÜBERNEHMER

| Input Variable | Value in TEUR | Output Variable | Value in TEUR |
|---|---------------|--|---------------|
| Is Netincome Regular Fin Netinterest Expensesforsubordinateloans Remainder | 0 | Other Long Term Equity Investments | 0 |
| Is Netincome Regular Fin Netinterest Expensesrefugeehostel Remainder | 0 | Bs Ass Fixass Fin Participassoc | 0 |
| Is Netincome Regular Fin Netinterest Income Assoc Remainder | 0 | Long Term Securities | 0 |
| Is Netincome Regular Fin Netinterest Income Remainder | 0,023 | Shares In Affiliated Companies Shares In Corporations | 0 |
| Is Netincome Regular Fin Netinterest Income Valuediscount Remainder | 0 | Shares In Affiliated Companies | 0 |
| Is Netincome Regular Fin Netinterest Remainder | 0 | Long Term Financial Assets | 0 |
| Is Netincome Regular Fin Netparticipation Amortfinanc Remainder | 0 | Bs Ass Fixass Tan Advpaym | 0 |
| Is Netincome Regular Fin Netparticipation Amortfinanc Securrass Remainder | 0 | Buildings On Third Party Land | 0 |
| Is Netincome Regular Fin Netparticipation Earningprofsharing Fiscalunity Profittransfer Grouptaxalloc Remainder | 0 | Construction Preparatory Costs | 0 |
| Is Netincome Regular Fin Netparticipation Earningprofsharing Fiscalunity Profittransfer Remainder | 0 | Prepayments And Assets Under Construction | 0 |
| Is Netincome Regular Fin Netparticipation Earningprofsharing Fiscalunity Remainder | 0 | Bs Ass Fixass Tan Landbuildings Advpaym | 0 |
| Is Netincome Regular Fin Netparticipation Earnings Assoc Remainder | 0 | Bs Ass Fixass Tan Landbuildings Buildings | 0 |
| | | Land Land Rights And Buildings Including Buildings On Third Party Land Buildings On Own Land And Land Rights | 0 |
| | | Land Land Rights And Buildings Including Buildings On Third Party Land Undeveloped Land | 0 |
| | | Land Land Rights And Buildings Including Buildings On Third Party Land | 0 |
| | | Land With Third Party Heritable Building Rights | 0 |
| | | Bs Ass Fixass Tan Landwithnonresidentialbuildings | 0 |
| | | Land And Land Rights With Residential Buildings Wuv | 0 |
| | | Land And Land Rights Without Buildings | 0 |
| | | Other Tangible Fixed Assets Miscellaneous Other | 0 |



RealRate

BAUINDUSTRIE 2018

HS Bau GmbH
Rank 207 of 257

HS - BAU
GENERALÜBERNEHMER

| Input Variable | Value in TEUR | Output Variable | Value in TEUR |
|--|---------------|--|---------------|
| Is Netincome Regular Fin Netparticipation Earnings Groupcomp Remainder | 0 | Other Tangible Fixed Assets | 0 |
| Is Netincome Regular Fin Netparticipation Earnings Particip Remainder | 0 | Other Equipment Operating And Office Equipment Operating Equipment | 0 |
| Is Netincome Regular Fin Netparticipation Earnings Remainder | 0 | Other Equipment Operating And Office Equipment Office Equipment | 0 |
| Is Netincome Regular Fin Netparticipation Earningsecurities Remainder | 0 | Other Equipment Operating And Office Equipment Other Means Of Transport | 0 |
| Is Netincome Regular Fin Netparticipation Expensesassoc Remainder | 0 | Other Equipment Operating And Office Equipment | 0 |
| Is Netincome Regular Fin Netparticipation Loss Assoc Remainder | 0 | Tangible Fixed Assets | 142 |
| Is Netincome Regular Fin Netparticipation Loss Remainder | 0 | Fixed Assets | 144 |
| Is Netincome Regular Fin Netparticipation Losses Remainder | 0 | Other Assets | 0 |
| Is Netincome Regular Fin Netparticipation Remainder | 0 | Prepaid Expenses | 10 |
| Is Netincome Regular Operatingcogs Admincost Remainder | 0 | Assets | 500 |
| Is Netincome Regular Operatingcogs Grossoprofit Cogs Remainder | 0 | Equity Retained Profits Accumulated Losses Brought Forward | 45 |
| Is Netincome Regular Operatingcogs Grossoprofit Remainder | 0 | Deferred Tax Liabilities | 8,8 |
| Is Netincome Regular Operatingcogs Remainder | 0 | Is Netincome Regular Fin Netinterest Expensesforsubordinateloans | 0 |
| Is Netincome Regular Operatingcogs Salescost Remainder | 0 | Tax Provisions Deferred Tax Liabilities | 0 |
| | | Amortisation And Write Downs Of Intangible Fixed Assets And Depreciation And Write Downs Of Tangible Fixed Assets Tc Of Which Extraordinary Write Downs | 0 |
| | | Amortisation And Write Downs Of Intangible Fixed Assets And Depreciation And Write Downs Of Tangible Fixed Assets Tc Extraordinary Write Downs And Impairment Loss And Other Deductions Of Other Intangible Fixed Assets | 0 |



RealRate

BAUINDUSTRIE 2018

HS Bau GmbH
Rank 207 of 257

HS - BAU
GENERALÜBERNEHMER

| Input Variable | Value in TEUR | Output Variable | Value in TEUR |
|--|---------------|---|---------------|
| Is Netincome Regular Operatingtc Depramort Currass Remainder | 0 | Amortisation And Write Downs Of Intangible Fixed Assets And Depreciation And Write Downs Of Tangible Fixed Assets Tc Extraordinary Write Downs And Impairment Losses And Other Deductions Extraordinary Write Downs | 0 |
| Is Netincome Regular Operatingtc Depramort Fixass Extraordinary Remainder | 0 | Amortisation And Write Downs Of Intangible Fixed Assets And Depreciation And Write Downs Of Tangible Fixed Assets Tc Extraordinary Write Downs And Impairment Losses And Other Deductions | 0 |
| Is Netincome Regular Operatingtc Depramort Fixass Remainder | 0 | Amortisation And Write Downs Of Intangible Fixed Assets And Depreciation And Write Downs Of Tangible Fixed Assets Tc | 0 |
| Is Netincome Regular Operatingtc Depramort Fixass Specific Except Otherintan Remainder | 0 | Deferred Income | 0 |
| Is Netincome Regular Operatingtc Depramort Fixass Specific Except Remainder | 0 | Sonstige_kapitalkonten | 0 |
| Is Netincome Regular Operatingtc Depramort Fixass Specific Remainder | 0 | Capital Reserves Reserves Cap Res | 0 |
| Is Netincome Regular Operatingtc Depramort Fixassrefugeehostel Remainder | 0 | Corporation Reserves | 0 |
| Is Netincome Regular Operatingtc Depramort Remainder | 32 | Dim_parentdrs22k Accgroupstatement | 0 |
| Is Netincome Regular Operatingtc Depramort_ Remainder | 0 | Dim_parentdrs22k | 0 |
| Is Netincome Regular Operatingtc Grosstradingloss Remainder | 0 | Verguetung_des_mezzaninekapitals | 0 |
| Is Netincome Regular Operatingtc Grosstradingloss Totaloutput Jointvent Remainder | 0 | Equity Equity Equivalent Contributions By Silent Partners | 0 |
| Is Netincome Regular Operatingtc Grosstradingloss Totaloutput Remainder | 0 | Ausgleichsposten_fuer_anteile_anderer_gesellschafter | 0 |
| Is Netincome Regular Operatingtc Grosstradingloss_ Remainder | 0 | Sales Tc Gross Carrying Amount Of Which Rent And Lease | 0 |
| Is Netincome Regular Operatingtc Grosstradingprofit Materialservices Discounts Remainder | 0 | Taxes On Income Recognised Deferred Taxes Income From Change In Deferred Taxes | 0 |
| | | Bs Eqliab Equity Subscribedwithoutownshares | 25 |



RealRate

BAUINDUSTRIE 2018

HS Bau GmbH
Rank 207 of 257

HS - BAU
GENERALÜBERNEHMER

| Input Variable | Value in TEUR | Output Variable | Value in TEUR |
|--|---------------|--|---------------|
| Is Netincome Regular Operatingtc Grosstradingprofit Materialservices Material Purchased Remainder | 0 | Cost Of Sales Cos | 0 |
| Is Netincome Regular Operatingtc Grosstradingprofit Materialservices Material Rawmatconssup Remainder | 0 | Gross Profit On Sales Cos | 0 |
| Is Netincome Regular Operatingtc Grosstradingprofit Materialservices Material Remainder | 0 | Is Netincome Consolidationdifference | 0 |
| Is Netincome Regular Operatingtc Grosstradingprofit Materialservices Misc Remainder | 0 | Selling Expenses Cos | 0 |
| Is Netincome Regular Operatingtc Grosstradingprofit Materialservices Remainder | 339 | Contingent Liabilities From Guarantees | 0 |
| Is Netincome Regular Operatingtc Grosstradingprofit Materialservices Services Care Remainder | 0 | Contingent Liabilities | 0 |
| Is Netincome Regular Operatingtc Grosstradingprofit Materialservices Services Landforsale Remainder | 0 | Bs Eqliab Differencefromoffsetting | 0 |
| Is Netincome Regular Operatingtc Grosstradingprofit Materialservices Services Municipalmanagement Remainder | 0 | Bs Eqliab_ | 0 |
| Is Netincome Regular Operatingtc Grosstradingprofit Materialservices Services Nursing Remainder | 0 | Bs Eqliab Accruals_ | 0 |
| Is Netincome Regular Operatingtc Grosstradingprofit Materialservices Services Other Remainder | 0 | Bs Eqliab Accruals Construction | 0 |
| Is Netincome Regular Operatingtc Grosstradingprofit Materialservices Services Otherservices Remainder | 0 | Other Provisions | 0 |
| | | Provisions For Pensions And Similar Obligations | 0 |
| | | Tax Provisions Provision For Trade Tax | 0 |
| | | Tax Provisions | 0 |
| | | Provisions | 25 |
| | | Bs Eqliab Equity_ | 0 |
| | | Capital Reserves Of Which Other Additional Capital Contributions | 0 |
| | | Bs Eqliab Equity Capres Partner | 0 |
| | | Capital Reserves Equity Cap Res | 0 |
| | | Equity Equity Equivalent Partner Loans | 0 |
| | | Equity Net Income Net Loss For The Financial Year Balance Sheet Corporations | 13 |
| | | Bs Eqliab Equity Noncontrollingshares | 0 |
| | | Equity Net Retained Profits Net Accumulated Losses Balance Sheet Of Which Appropriated To Reserves | 0 |
| | | Bs Eqliab Equity Profitloss Noncontrollingshares | 0 |



RealRate

BAUINDUSTRIE 2018

HS Bau GmbH
Rank 207 of 257

HS - BAU
GENERALÜBERNEHMER

| Input Variable | Value in TEUR | Output Variable | Value in TEUR |
|--|---------------|---|---------------|
| Is Netincome Regular Operatingtc Grosstradingprofit Materialservices Services Propertymanagement Remainder | 0 | Equity Net Retained Profits Net Accumulated Losses Balance Sheet Of Which Withdrawn From Reserves | 0 |
| Is Netincome Regular Operatingtc Grosstradingprofit Materialservices Services Remainder | 0 | Bs Eqliab Equity Profitloss Use | 0 |
| Is Netincome Regular Operatingtc Grosstradingprofit Materialservices_ Remainder | 0 | Equity Net Retained Profits Net Accumulated Losses Balance Sheet | 0 |
| Is Netincome Regular Operatingtc Grosstradingprofit Remainder | 0 | Equity Reserves Partnerships | 0 |
| Is Netincome Regular Operatingtc Grosstradingprofit Totaloutput Inventorychange Decreaseconstructioninprogress Remainder | 0 | Bs Eqliab Equity Revenueres_ Revenue Reserves Appropriated Reserve Charity Appropriated | 0 |
| Is Netincome Regular Operatingtc Grosstradingprofit Totaloutput Inventorychange Remainder | -314 | Legal Reserve | 0 |
| Is Netincome Regular Operatingtc Grosstradingprofit Totaloutput Jointvent Remainder | 0 | Other Revenue Reserves | 0 |
| Is Netincome Regular Operatingtc Grosstradingprofit Totaloutput Netsales Care Remainder | 0 | Revenue Reserves Other Reserves With Restriction On Distribution | 0 |
| Is Netincome Regular Operatingtc Grosstradingprofit Totaloutput Netsales Nursing Remainder | 0 | Reserves Provided For By The Articles Of Association | 0 |
| Is Netincome Regular Operatingtc Grosstradingprofit Totaloutput Netsales Propertymanagement Remainder | 0 | Revenue Reserves Unappropriated Reserve | 0 |
| | | Profit Reserves Revenue Reserves | 0 |
| | | Bs Eqliab Equity Subordinateloans | 0 |
| | | Bs Eqliab Equity Subscribedwithownshares | 25 |
| | | Equity | 83 |
| | | Other Special Reserves Contributions By Silent Partners | 0 |
| | | Bs Eqliab Otherspecres Other Adjustmentitem Capitalconsolidation | 0 |
| | | Bs Eqliab Otherspecres Other Adjustmentitem | 0 |
| | | Other Special Reserves Other Special Reserves | 0 |
| | | Other Special Reserves Special Reserve For Capitalised Treasury Shares | 0 |



RealRate

BAUINDUSTRIE 2018

HS Bau GmbH
Rank 207 of 257

HS - BAU
GENERALÜBERNEHMER

| Input Variable | Value in TEUR |
|---|---------------|
| Is Netincome Regular Operatingtc Grosstradingprofit Totaloutput Netsales Propertymanagementrefugeehostel Remainder | 0 |
| Is Netincome Regular Operatingtc Grosstradingprofit Totaloutput Netsales Propertysales Remainder | 0 |
| Is Netincome Regular Operatingtc Grosstradingprofit Totaloutput Netsales Remainder | 1.871 |
| Is Netincome Regular Operatingtc Grosstradingprofit Totaloutput Netsales_ Remainder | 0 |
| Is Netincome Regular Operatingtc Grosstradingprofit Totaloutput Ownwork Remainder | 0 |
| Is Netincome Regular Operatingtc Grosstradingprofit Totaloutput Remainder | 0 |
| Is Netincome Regular Operatingtc Othercost Remainder | 280 |
| Is Netincome Regular Operatingtc Otheroprevenue Lease Remainder | 0 |
| Is Netincome Regular Operatingtc Otheroprevenue Releasepretaxres Remainder | 0 |
| Is Netincome Regular Operatingtc Otheroprevenue Remainder | 6,5 |
| Is Netincome Regular Operatingtc Otheroprevenue Revalfixass Fin Remainder | 0 |
| Is Netincome Regular Operatingtc Otheroprevenue Revalfixass Remainder | 0 |
| Is Netincome Regular Operatingtc Remainder | 0 |

| Output Variable | Value in TEUR |
|--|---------------|
| Other Special Reserves Contributions To Implement A Capital Increase | 0 |
| Other Special Reserves Special Reserve For Investment Grants And Premiums | 0 |
| Other Special Reserves | 0 |
| Bs Eqliab Retention | 0 |
| Total Balance Total Equity And Liabilities | 500 |
| Balance Sheet | 500 |
| Other Operating Expenses Tc | 280 |
| Is Netincome Priortoincomesharing | 0 |
| Taxes On Income Recognised Deferred Taxes | 0 |
| Ausserordentliches_ergebnis | 0 |
| Interest And Similar Expenses Of Which Other Interest And Similar Expenses From Discounting | 0 |
| Interest And Similar Expenses | 6,1 |
| Is Netincome Regular Fin Netinterest Expensesrefugeehostel | 0 |
| Other Interest And Similar Income Of Which Other Interest And Similar Income From Affiliated Companies | 0 |
| Other Interest And Similar Income | 0,023 |
| Net Interest Income | 6,1 |
| Financial Result | 6,1 |
| General And Administrative Expenses Cos | 0 |
| Operating Result Cos | 0 |
| Is Netincome Regular Operatingtc Depramort_ | 0 |



RealRate

BAUINDUSTRIE 2018

HS Bau GmbH
Rank 207 of 257

HS - BAU
GENERALÜBERNEHMER

| Input Variable | Value in TEUR | Output Variable | Value in TEUR |
|--|---------------|--|---------------|
| Is Netincome Regular Operatingtc Staff Remainder | 885 | Write Downs Tc Of Current Assets To The Extent As They Exceed The Write Downs That Are Usual For The Corporation | 0 |
| Is Netincome Regular Operatingtc Staff Salaries Remainder | 0 | Depreciation Amortisation And Write Downs Tc | 32 |
| Is Netincome Regular Operatingtc Staff Social Pensions Remainder | 0 | Is Netincome Regular Operatingtc Grosstradingloss_ | 0 |
| Is Netincome Regular Operatingtc Staff Social Remainder | 0 | Is Netincome Regular Operatingtc Grosstradingloss | 0 |
| Is Netincome Regular Remainder | 0 | Other Operating Income Tc Income From Reversal Of Special Tax Allowable Reserves With Accrual Character And Other Special Tax Allowable Reserves | 0 |
| Is Netincome Remainder | -3.116 | Other Operating Income Tc Income From Reversal Of Write Downs Of Fixed Assets Income From Reversal Of Write Downs Of Long Term Financial Assets | 0 |
| Is Netincome Tax Deferred Addition Remainder | 0 | Other Operating Income Tc Income From Reversal Of Write Downs Of Fixed Assets | 0 |
| Is Netincome Tax Deferred Remainder | 0 | Other Operating Income Tc | 6,5 |
| Is Netincome Tax Remainder | 5,8 | Wages And Salaries Tc | 0 |
| Is Netincome Thereoffminorityintloss Remainder | 0 | Social Security Post Employment And Other Employee Benefit Costs Tc | 0 |
| Is Netincome Thereoffminorityintprofit Remainder | 0 | Personnel Expenses Tc | 885 |
| Is Remainder | 0 | Operating Result Tc | 3.099 |
| Liab_primaryitem Bank Above1year Above5years Remainder | 0 | Is Netincome Regular | 3.105 |
| Liab_primaryitem Bank Above1year Remainder | 0 | Is Netincome Beforeothertaxes | 0 |
| Liab_primaryitem Bank Above1year Upto5years Remainder | 0 | Earnings After Taxes | 15 |
| Liab_primaryitem Bank Remainder | 0 | Is Netincome Ebit | 0 |
| Liab_primaryitem Remainder | 0 | Is Netincome Ebt | 0 |
| Liab_primaryitem Total Above1year Above5years Remainder | 0 | Is Netincome Othertaxes Earnings | 0 |
| Liab_primaryitem Total Above1year Remainder | 0 | | |
| Liab_primaryitem Total Above1year Upto5years Remainder | 0 | | |



RealRate

BAUINDUSTRIE 2018

HS Bau GmbH
Rank 207 of 257

HS - BAU
GENERALÜBERNEHMER

| Input Variable | Value in TEUR |
|--|---------------|
| Liab_primaryitem Total Remainder | 0 |
| Mezzaninekapital Remainder | 0 |
| Nt Employeesaverageperiod Remainder | 0 |
| Nt Remainder | 0 |
| Sonstige_kapitalkonten Remainder | 0 |
| Treuhandverbindlichkeiten Remainder | 0 |
| Treuhandvermoegen Remainder | 0 |
| Verbindlichkeiten Remainder | 0 |
| Verguetung_des_mezzaninekapitals Remainder | 0 |

| Output Variable | Value in TEUR |
|---|---------------|
| Other Taxes | 2,4 |
| Taxes On Income | 5,8 |
| Is Netincome Thereoffminorityintloss | 0 |
| Net Income | 13 |
| Ausserordentliche_aufwendungen | 0 |
| Appropriation Of Net Profit | 0 |
| Mezzaninekapital | 0 |
| Accounting_error | 0 |
| Treuhandverbindlichkeiten | 0 |
| Treuhandvermoegen | 0 |
| Income Statement | 13 |
| Life Of Liabilities Dimension | 0 |
| Notes | 0 |
| Ausserordentliche_ertraege | 0 |
| Stockholders Equity | 116 |
| BaseVar | 442 |
| Economic Capital Ratio before Limited Liability | 35% |
| Economic Capital Ratio | 61% |